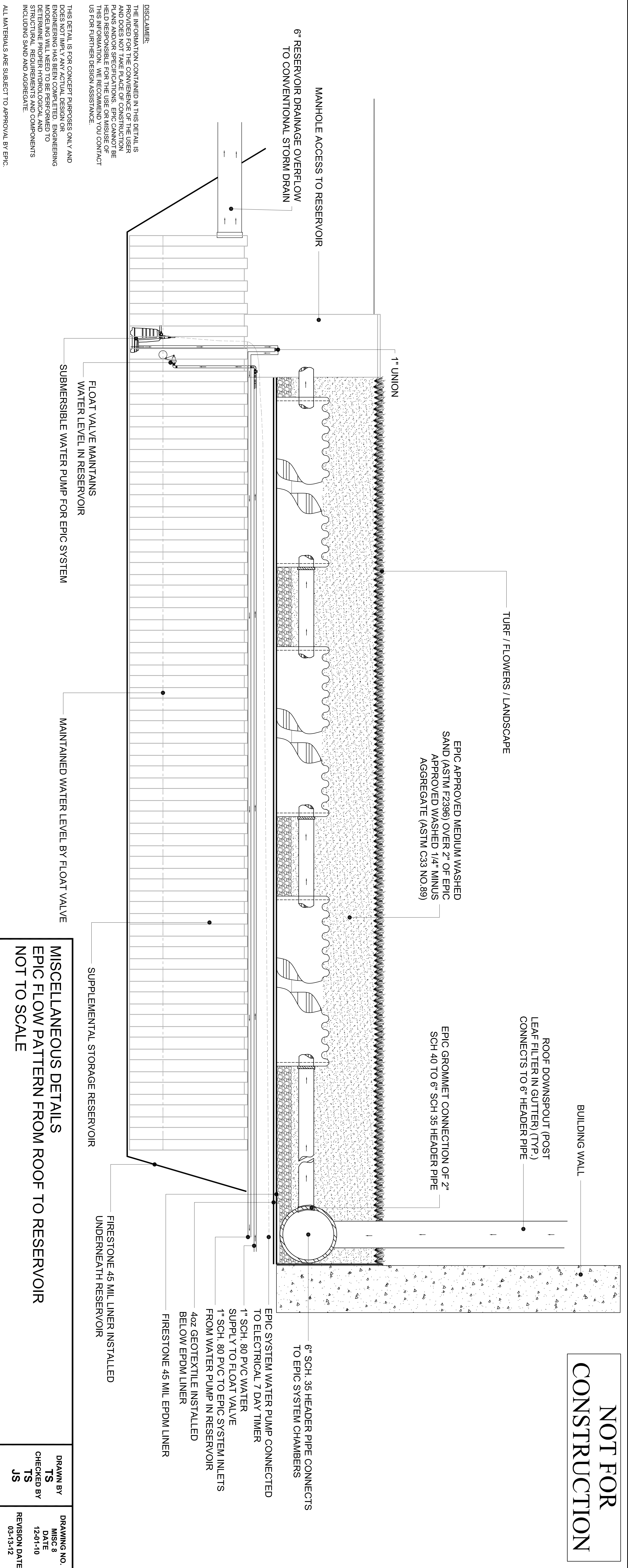


**NOT FOR
CONSTRUCTION**



DISCLAIMER:
THE INFORMATION CONTAINED IN THIS DETAIL IS PROVIDED FOR THE CONVENIENCE OF THE USER AND DOES NOT TAKE PLACE OF CONSTRUCTION PLANS AND/OR SPECIFICATIONS. EPIC CANNOT BE HELD RESPONSIBLE FOR THE USE OR MISUSE OF THIS INFORMATION. WE RECOMMEND YOU CONTACT US FOR FURTHER DESIGN ASSISTANCE.

THIS DETAIL IS FOR CONCEPT PURPOSES ONLY AND DOES NOT IMPLY ANY ACTUAL DESIGN OR ENGINEERING HAS BEEN COMPLETED. ENGINEERING CONSULTANTS HAS BEEN CONSULTED TO DETERMINE PROPER HYDROLOGICAL AND STRUCTURAL REQUIREMENTS AND COMPONENTS INCLUDING SAND AND AGGREGATE.
ALL MATERIALS ARE SUBJECT TO APPROVAL BY EPIC.

MANHOLE ACCESS TO RESERVOIR
6" RESERVOIR DRAINAGE OVERFLOW TO CONVENTIONAL STORM DRAIN
1" UNION
TURF / FLOWERS / LANDSCAPE
EPIC APPROVED MEDIUM WASHED SAND (ASTM F2396) OVER 2" OF EPIC APPROVED WASHED 1/4" MINUS AGGREGATE (ASTM C33 NO.89)

FLOAT VALVE MAINTAINS WATER LEVEL IN RESERVOIR
SUBMERSIBLE WATER PUMP FOR EPIC SYSTEM
MAINTAINED WATER LEVEL BY FLOAT VALVE
SUPPLEMENTAL STORAGE RESERVOIR

BUILDING WALL
ROOF DOWNSPOUT (POST LEAF FILTER IN GUTTER) (TYP.) CONNECTS TO 6" HEADER PIPE
EPIC GROMMET CONNECTION OF 2" SCH 40 TO 6" SCH 35 HEADER PIPE
6" SCH. 35 HEADER PIPE CONNECTS TO EPIC SYSTEM CHAMBERS
EPIC SYSTEM WATER PUMP CONNECTED TO ELECTRICAL 7 DAY TIMER
1" SCH. 80 PVC WATER SUPPLY TO FLOAT VALVE
1" SCH. 80 PVC TO EPIC SYSTEM INLETS FROM WATER PUMP IN RESERVOIR
40Z GEOTEXTILE INSTALLED BELOW EPDM LINER
FIRESTONE 45 MIL EPDM LINER
FIRESTONE 45 MIL LINER INSTALLED UNDERNEATH RESERVOIR

MISCELLANEOUS DETAILS
EPIC FLOW PATTERN FROM ROOF TO RESERVOIR
NOT TO SCALE

DRAWN BY TS	DRAWING NO. MISC 8
CHECKED BY TS	DATE 12-01-10
JS	REVISION DATE 03-13-12