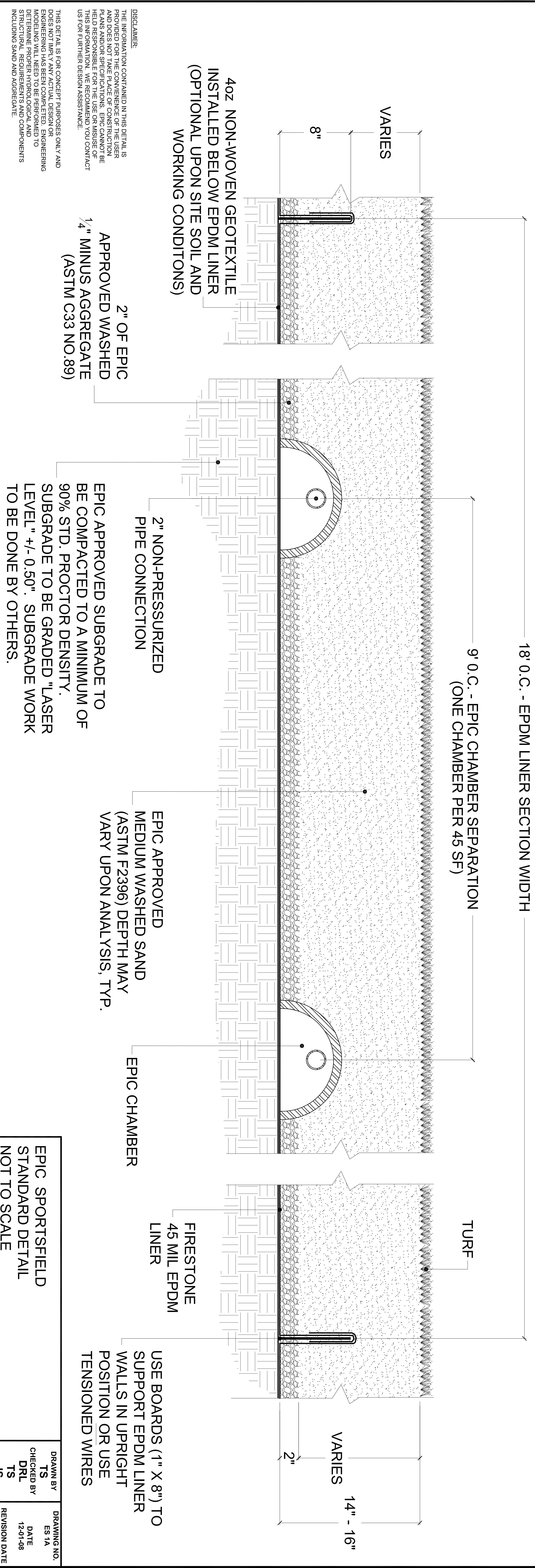


**NOT FOR
CONSTRUCTION**



4oz NON-WOVEN GEOTEXTILE
INSTALLED BELOW EPDM LINER
(OPTIONAL UPON SITE SOIL AND
WORKING CONDITIONS)

2' OF EPIC
APPROVED WASHED
1/4" MINUS AGGREGATE
(ASTM C33 NO.89)

2" NON-PRESSURIZED
PIPE CONNECTION

EPIC APPROVED SUBGRADE TO
BE COMPACTED TO A MINIMUM OF
90% STD. PROCTOR DENSITY.
SUBGRADE TO BE GRADED "LASER
LEVEL" +/- 0.50". SUBGRADE WORK
TO BE DONE BY OTHERS.

EPIC APPROVED
MEDIUM WASHED SAND
(ASTM F2396) DEPTH MAY
VARY UPON ANALYSIS, TYP.

EPIC CHAMBER

FIRESTONE
45 MIL EPDM
LINER

USE BOARDS (1" X 8") TO
SUPPORT EPDM LINER
WALLS IN UPRIGHT
POSITION OR USE
TENSIONED WIRES

EPIC SPORTSFIELD
STANDARD DETAIL
NOT TO SCALE

DRAWN BY TS	DRAWING NO. ES 1A
CHECKED BY DRL	DATE 12-01-08
TS	REVISION DATE 03-12-12

DISCLAIMER:
THE INFORMATION CONTAINED IN THIS DETAIL IS
PROVIDED FOR THE CONVENIENCE OF THE USER
AND DOES NOT CONSTITUTE OR CONSTITUTE AN
OFFER OF ANY SERVICE OR PRODUCT. THE USER
IS SOLELY RESPONSIBLE FOR THE USE OR MISUSE OF
THIS INFORMATION. WE RECOMMEND YOU CONTACT
US FOR FURTHER DESIGN ASSISTANCE.

THIS DETAIL IS FOR CONCEPT PURPOSES ONLY AND
DOES NOT IMPLY ANY ACTUAL DESIGN OR
ENGINEERING HAS BEEN PERFORMED. ENGINEERING
AND DESIGN SERVICES ARE PROVIDED TO THE USER
AND THE USER IS SOLELY RESPONSIBLE FOR
DETERMINING THE APPROPRIATENESS OF THE
STRUCTURAL REQUIREMENTS AND COMPONENTS
INCLUDING SAND AND AGGREGATE.

ALL MATERIALS ARE SUBJECT TO APPROVAL BY EPIC.